



Kuance
STUDIO

**Meet the Luxury
side of Concrete**



LITHEOZ

Reintroducing concrete from a basic construction material to a high quality luxury product, Nuance Studio is a state-of-art set up, using technologically advanced and ultra high performance concrete named "Litheoz".



The concrete **Difference**

Nuance Studio specializes production in various verticals of design, for both indoor & outdoor spaces. Backed with modern techniques, Litheoz is a customizable material that can be moulded into different forms and shapes.

A modern interior space featuring a wall of vertical concrete panels. A black arched floor lamp is positioned on the left, casting a light on the wall. The floor has a dark, geometric pattern. The overall atmosphere is minimalist and industrial.

Exploring **Creativity**

Most perceptions about everything is limited to its primary purpose. The “Difference” is in exploring the infinite possibilities that lay ahead. Concrete, a material categorized as a basic part of construction, has actively been experimented across history. This earthy material having rigid characteristics, has been moulded, carved and designed, resulting in excellent manifestation of creativity. Renounded architects such as Zaha Hadid, Tadao Ando and many others have explored this infinite possibilities of concrete, leading them to design unique marvels in the vast realm of architecture



"The artistic capability of reinforced concrete is so fantastic - that is the way to go"

Oscar Niemeyer



Going Beyond **Primary**

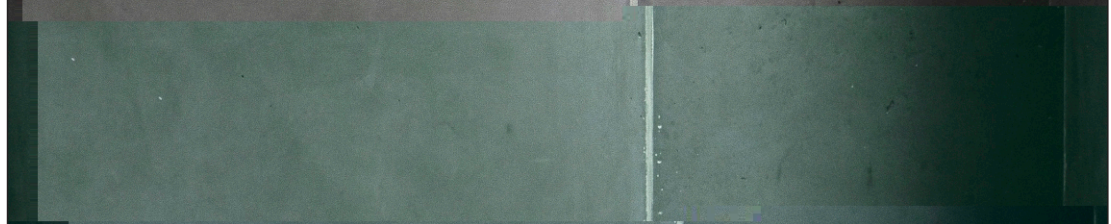
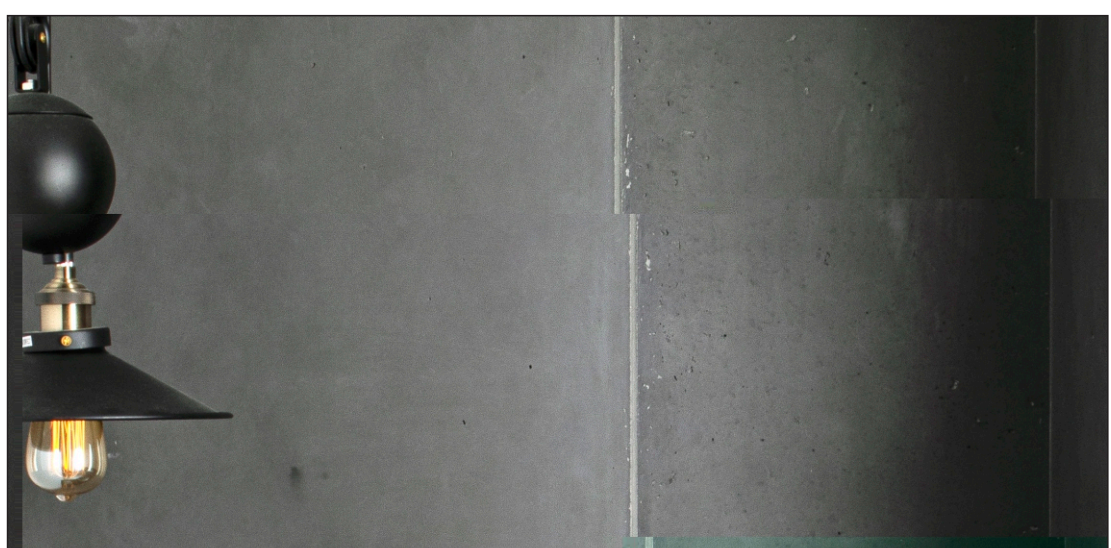
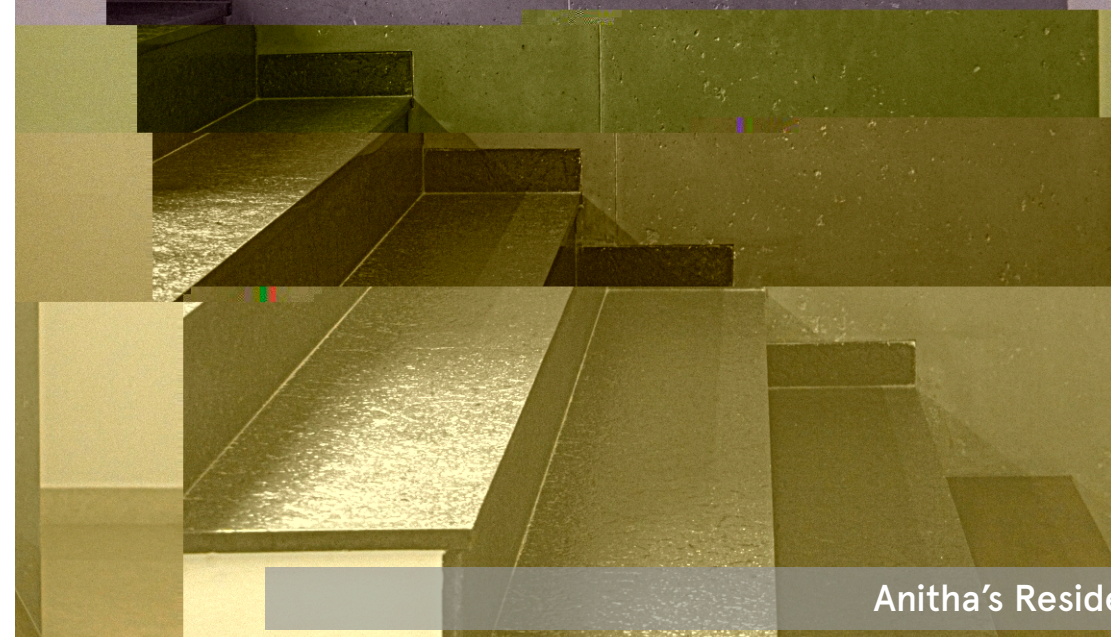
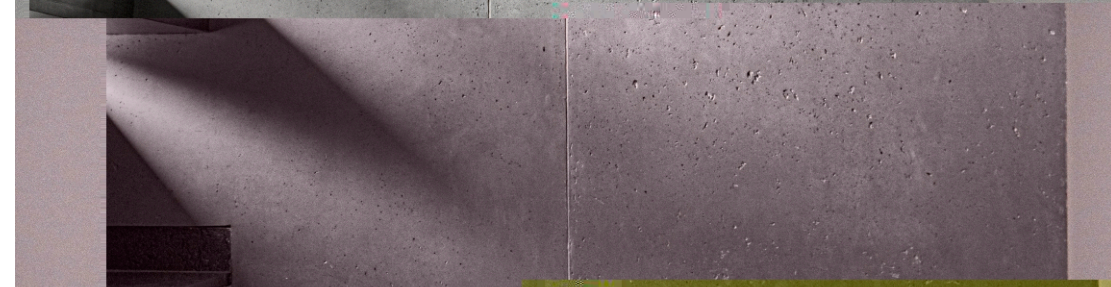
When imagination and creativity become the dynamics of product design, limitations begin to cease. Bringing in a product, developed to customize, Litheoz is a fresh vertical encompassing all areas of handcrafted living. By blending the best of traditional/modern mould making and casting methodologies, skilful designers who are well aware of the potential of Litheoz, develop products or an experience in close connection to your unique requirements. Creating possibilities in a space bound by limitations, Nuance Studio will efficiently transform your ideas to reality.



Conference Table_TCG Mumbai



Forum Mall_Koramangala Bangalore



Anitha's Residence_Bangalore



Going Beyond **Grey**

The next possibility we explored after moving concrete from a basic construction material to a luxury product, is its colour. Nuance Studio has carefully formulated and hand picked twelve standardized colours to exquisitely compliment Litheoz. One other unique feature is the “+1” offering. Here, we create a custom made colour to match your unique liking or requirement.



Design And Texture

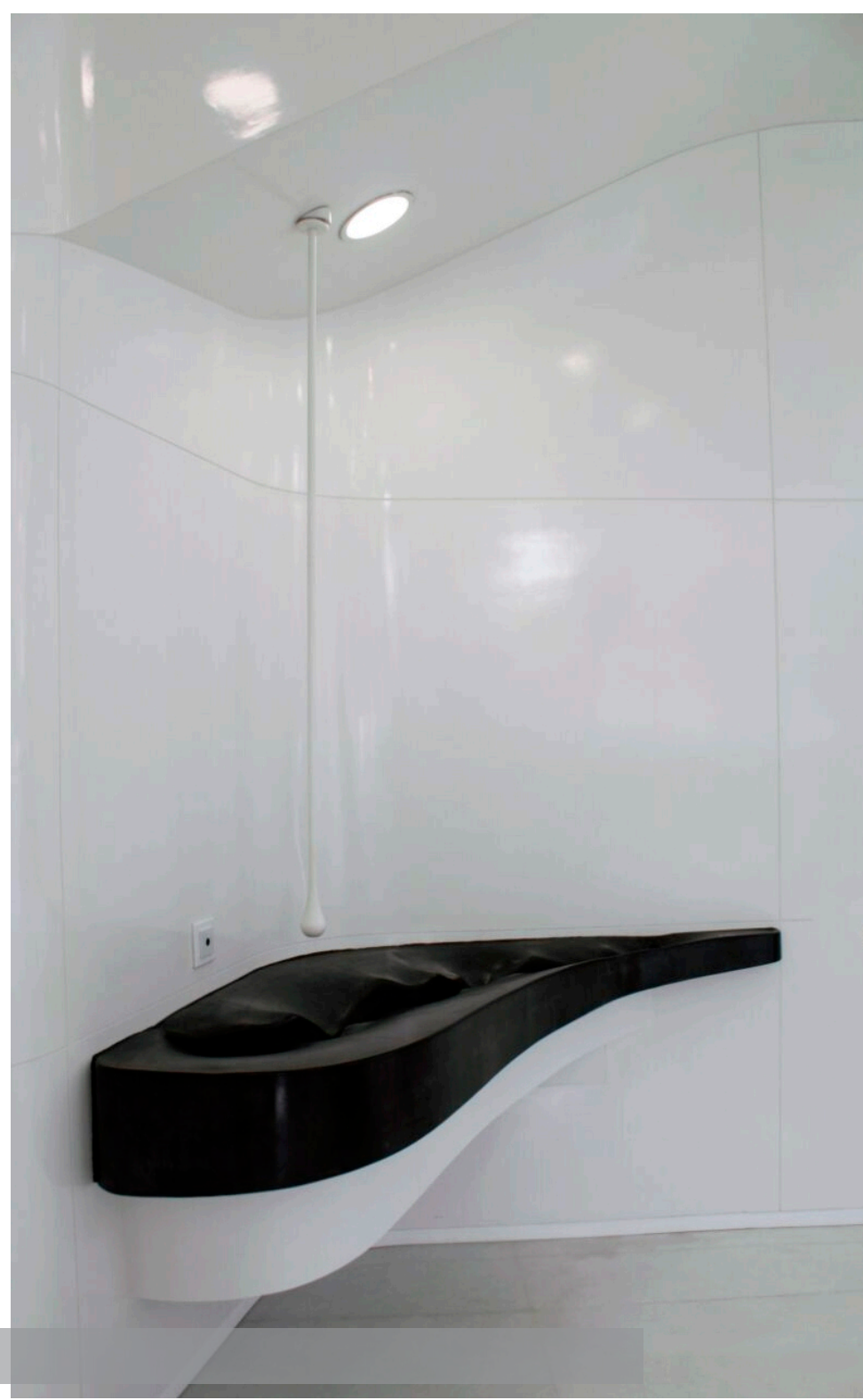
With superfine grains & particles packing density, Litheoz is able to replicate intricate mould details with incredible accuracy. Leather, fabric, leaves, and other numerous textures have deftly created as per unique requirements, with an ever growing room for never ending possibilities. Offering three standardized textures: Smooth, Distressed & Travertine, Litheoz creates these patterns naturally, resulting it an unique handcrafted products each time.



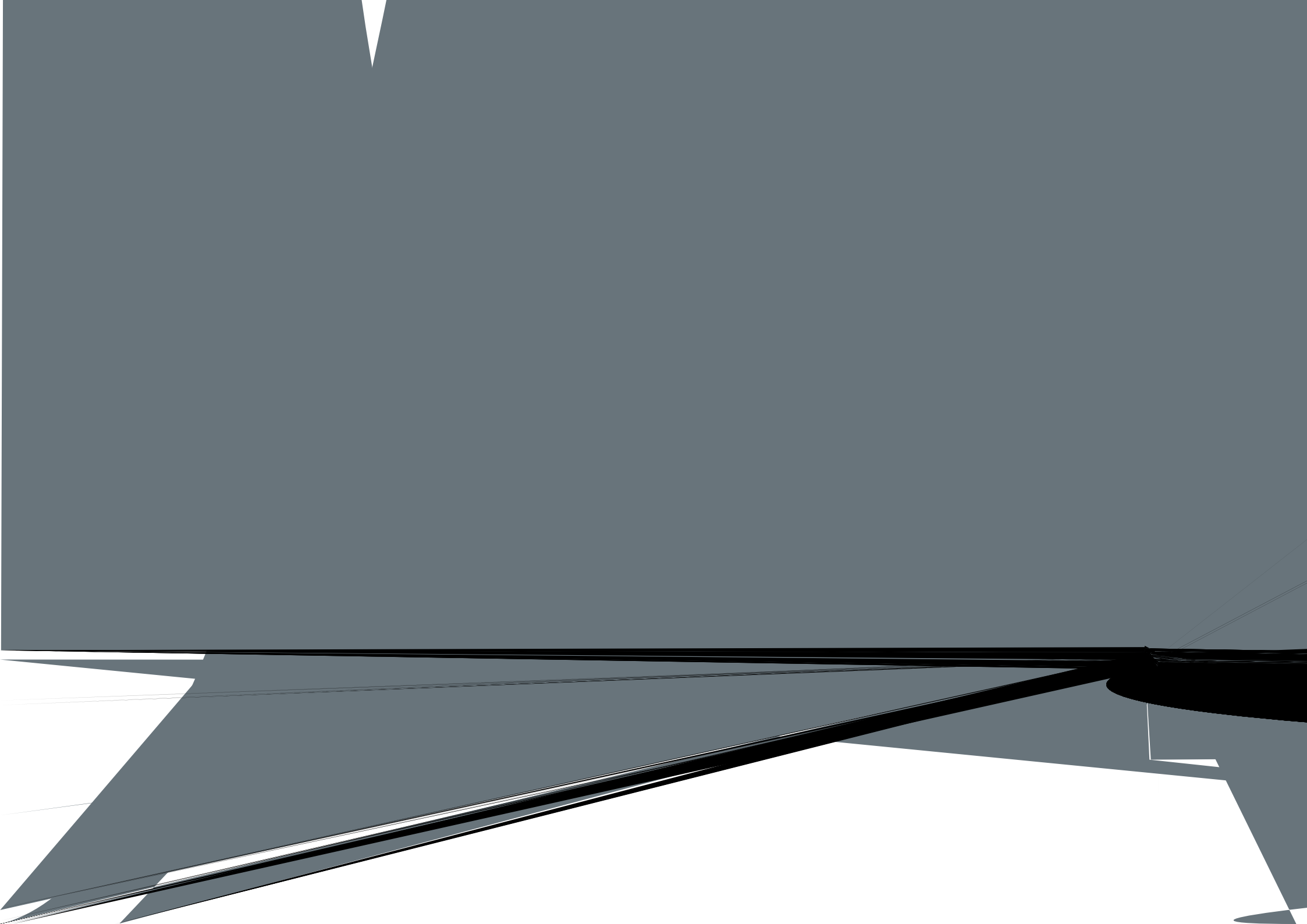
UBER Corporate Office_Bangalore



Corporate Office_Hyderabad



Washbasins



ARCHITECT
INTERIORS INDIA

AD
ARCHITECTURAL DIGEST

luciano
and Garden

nuance
STUDIO

Corporate Office & Flagship Studio
290/A, 4th floor, 34th cross, 9th main, Jayanagar 4th Block, Bangalore 560 011, India.
info@thenuancestudio.com | +91-8040998777